



Product Information & Manual

Information of other products is available at: www.leadgenebio.com

Nipah Virus Antigen Rapid Test Kit

(25 strips)

Cat no. LDG0002LR

Description

Nipah virus is a highly dangerous zoonotic pathogen primarily prevalent in South Asia, posing a significant threat to global public health. Fruit bats are the primary natural host of the virus. Humans can become infected through the consumption of contaminated food or direct contact with the bodily fluids of infected animals. Nipah virus infection presents with a broad spectrum of clinical symptoms, from asymptomatic to severe respiratory and neurological disorders, and even death. Due to its high transmissibility and mortality rate, early and accurate diagnosis is crucial for outbreak control.

The Nipah Virus Antigen Rapid Test Kit is based on the sandwich lateral flow immunoassay (sandwich LFIA) principle and is specifically designed to detect the N protein antigen of the Nipah virus. This method employs specific antibodies to capture and visualize the N protein antigen, delivering results rapidly without requiring complex laboratory equipment. **However, this test is intended for research use only and is NOT suitable for diagnostic or therapeutic applications.**

Kit Components

Nipah Virus Antigen Lateral Flow Device	25 Strips
Extraction Buffer	12 mL, 1 bottle
Instruction Manual	1

Sample Requirements and Dilution Conditions

Sample Type	Dilution Requirements
Swab Specimen	Collect a nasopharyngeal sample using a swab and immerse the swab in Extraction Buffer for lysis.

Note: The NiV Nucleocapsid Protein (Catalog No. LDG010PVM) is available for use as a protein standard. When serially diluted in Extraction Buffer, a limit of detection (LOD) as low as 1-5 ng/mL can be achieved.

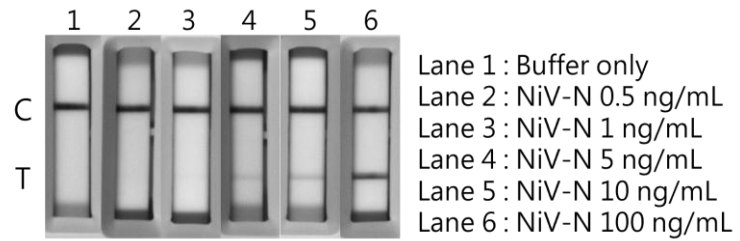
Protocol

1. Remove the test device from the foil pouch and place it on a clean and level surface.
2. Dispense 400 μ L of Extraction Buffer into a clean tube.
3. Collect a nasopharyngeal sample using a swab.
4. Immerse the swab sample into the Extraction Buffer tube, then roll the swab at least five times.
5. Leave the swab in the Extraction Buffer tube for one minute to ensure thorough lysis.
6. Dispense 100 μ L of the sample into the sample well of the test device.
7. Interpret the result after 15 minutes.

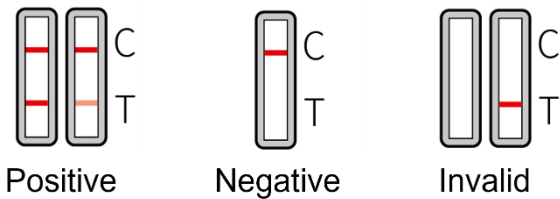
Materials required but not provided

1. 100-1000 μ L adjustable single-channel micropipettes with disposable tips or disposable droppers (100 μ L approximately five drops)
2. Disposable 1.5-2 mL microcentrifuge tubes
3. Disposable nasopharyngeal swabs
4. Timers

Example



Result Interpretation



Disclaimer

For Research Use or Further Manufacturing Only.

Performance

Nipah Virus Antigen Rapid Test Kit has a minimum detection limit for Nipah virus N protein of approximately 1-5 ng/mL.

Storage

1. Test kits should be stored at room temperature.
2. Test devices must remain in the sealed foil pouch until use, as they are sensitive to humidity.
3. Test kits are for single use only and should not be reused.
4. Do not use the kit if the package is damaged, or the physical appearance is altered.

LEADGENE BIOMEDICAL, INC.

No.9, Ln. 147, Zhengbei 1st Rd., Yongkang Dist., Tainan City 710, Taiwan R.O.C. TEL: +886-6-2536677 FAX: +886-6-2531536